

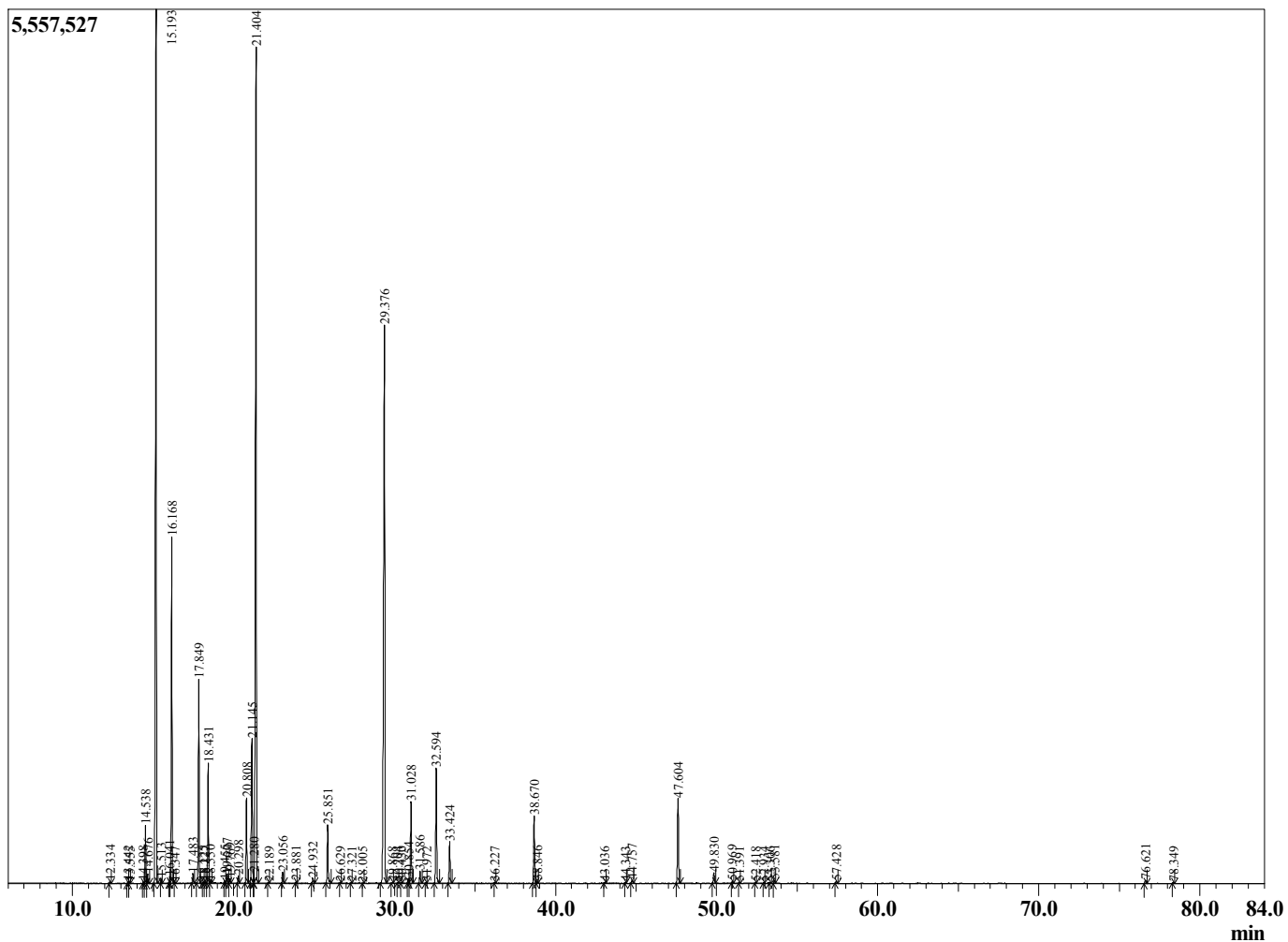
Sample Information

Sample Type : Essential Oil
 Sample Name : Rosmarinus officinalis

Rosemary Camphor
 Lot# SPR7-RW
 Country: Spain



Chromatogram Rosmarinus officinalis



R.Time	Name	Area%
12.334	Tricyclene	0.04
13.442	Bornylene	0.03
13.555	Unidentified	0.03
14.398	Hashishene	0.03
14.538	Tricyclene	1.17
14.676	alpha-Thujene	0.20
15.193	alpha-Pinene	21.20
15.513	beta-Fenchene	0.09
16.041	alpha-Fenchene	0.15
16.168	Camphene	7.27
16.347	Thuja-2,4(10)diene	0.01
17.483	Sabinene	0.21
17.849	beta-Pinene	4.46
18.125	3-Octanone	0.02
18.227	3-para-Menthene	0.02
18.431	Myrcene	2.60
18.550	Dehydro-1,8-Cineole	0.04
19.455	Pseudolimonene	0.04
19.607	alpha-Phellandrene	0.18
19.769	delta-3-Carene	0.09
20.298	alpha-Terpinene	0.16
20.808	para-Cymene	2.05
21.145	Limonene	3.89
21.280	beta-Phellandrene	0.12
21.404	1,8-cineole	23.37
22.189	trans-beta-Ocimene	0.02
23.056	gamma-Terpinene	0.27
23.881	trans-Sabinene hydrate	0.04
24.932	Terpinolene	0.12
25.851	Linalool	1.47
26.629	Unidentified	0.01
27.321	alpha-Fenchol	0.02
28.005	Unidentified	0.01
29.376	Camphor	18.84
29.868	trans-beta-Terpineol	0.02
30.204	Unidentified	0.01
30.430	Isoborneol	0.02
30.854	delta-Terpineol	0.12
31.028	Borneol	2.12
31.586	Terpinen-4-ol	0.31
31.972	para-Cymen-8-ol	0.02
32.594	alpha-Terpineol	3.07
33.424	Verbenone	1.06
36.227	Nerol	0.02
38.670	Bornyl acetate	1.77
38.846	Isobornyl acetate	0.04
43.036	Eugenol	0.03
44.343	alpha-Ylangene	0.02
44.757	alpha-Copaene	0.10
47.604	beta-Caryophyllene	2.34
49.830	alpha-Humulene	0.28
50.969	trans-Cadina-1(6),4-diene	0.06
51.391	Unidentified	0.01
52.418	alpha-Murolene	0.01
52.934	beta-Bisabolene	0.02
53.306	gamma-Cadinene	0.03

R.Time	Name	Area%
53.581	delta-Cadinene	0.07
57.428	Caryophyllene oxide	0.06
76.621	Myrcene dimer I	0.10
78.349	Myrcene dimer II	0.03
		100.00